



Mammoth Trails Meeting



Introduction – Presenters



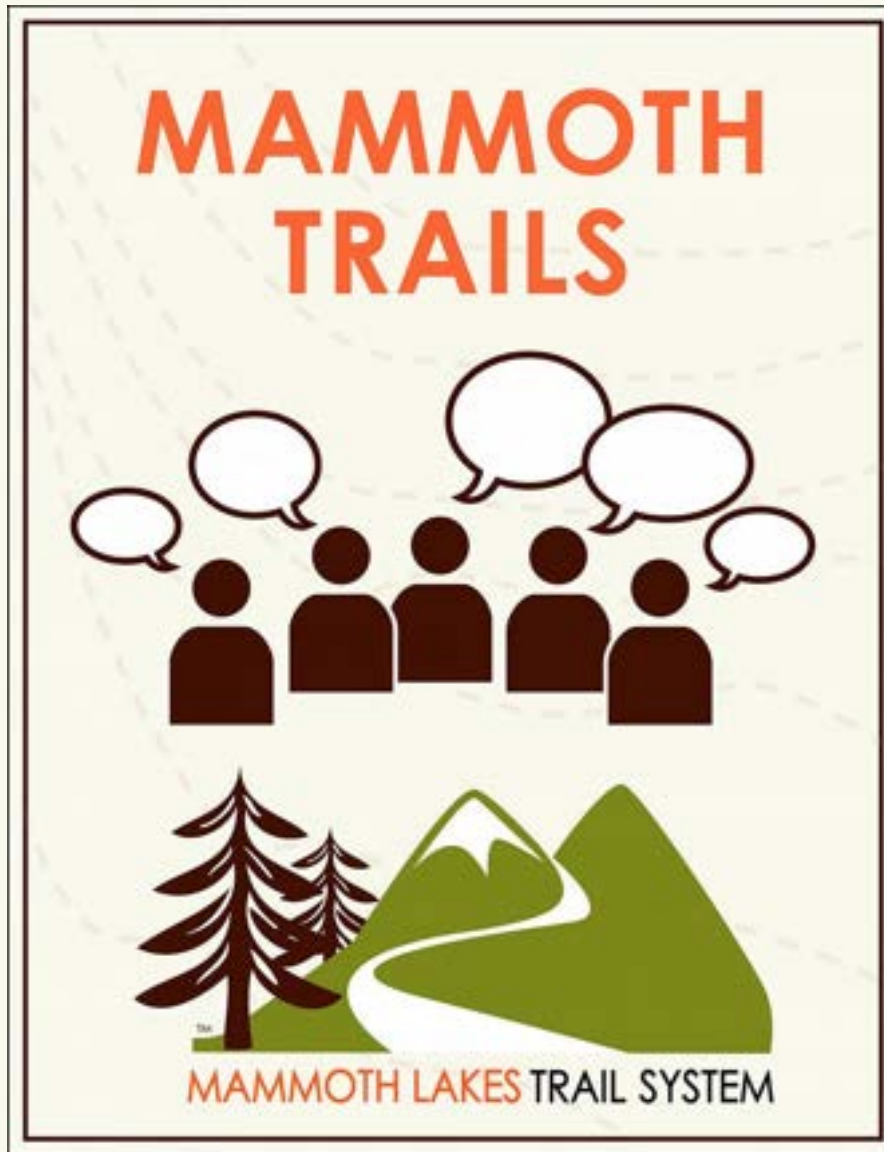
Joel Rathje
Trails Manager, TOML



Andrew Mulford
GIS Manager, MLTPA

Matt Paruolo
*Eastern Sierra Sustainable
Recreation Coordinator,
Mono County*

Introduction - Mammoth Trails



- Formed in September 2006
- “Confederation of user groups and clubs organized and maintained to promote the pursuit of each group's recreation mission and, importantly, to extend the necessary stewardship to the physical resources upon which these activities take place.”



SHADY REST

INYO CRATERS

TRAILS & PLANNING



Project Overview

California State Parks Off-Highway Motor Vehicle Division Grant



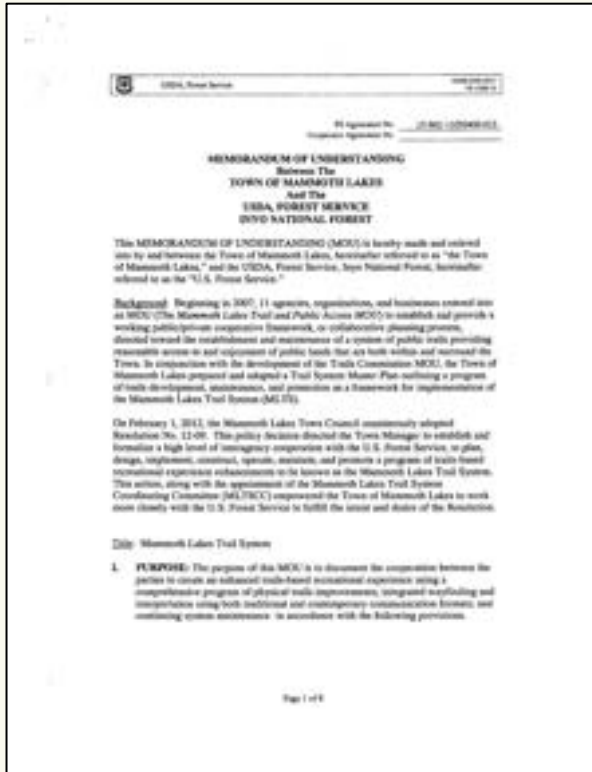


LEGAL AND FIDUCIARY AUTHORITIES



MAMMOTH LAKES TRAIL SYSTEM MOU

mammothtrails.org MOU

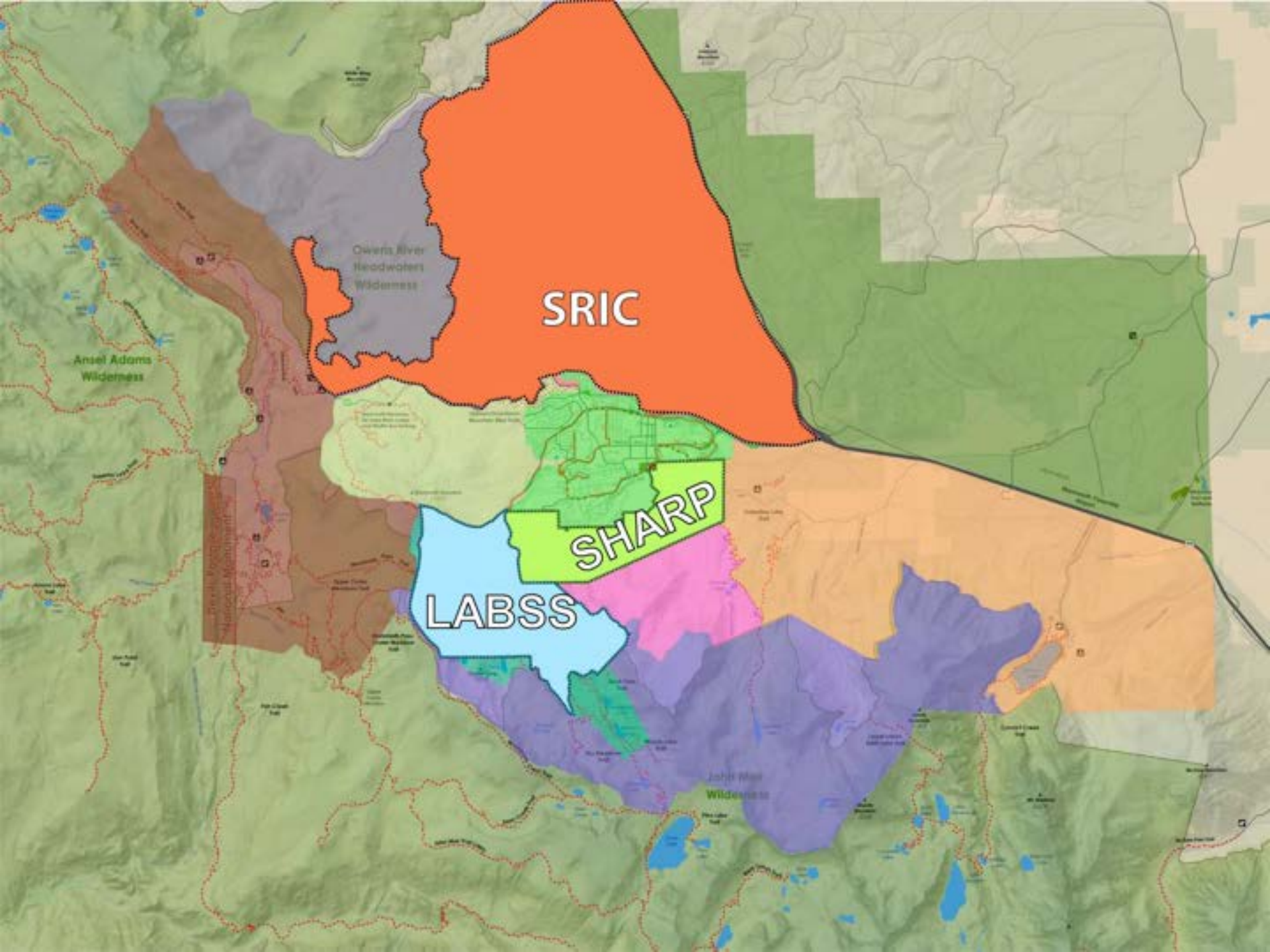




Town of Mammoth Lakes Trail System Master Plan

Adopted: October 19, 2011





SRIC

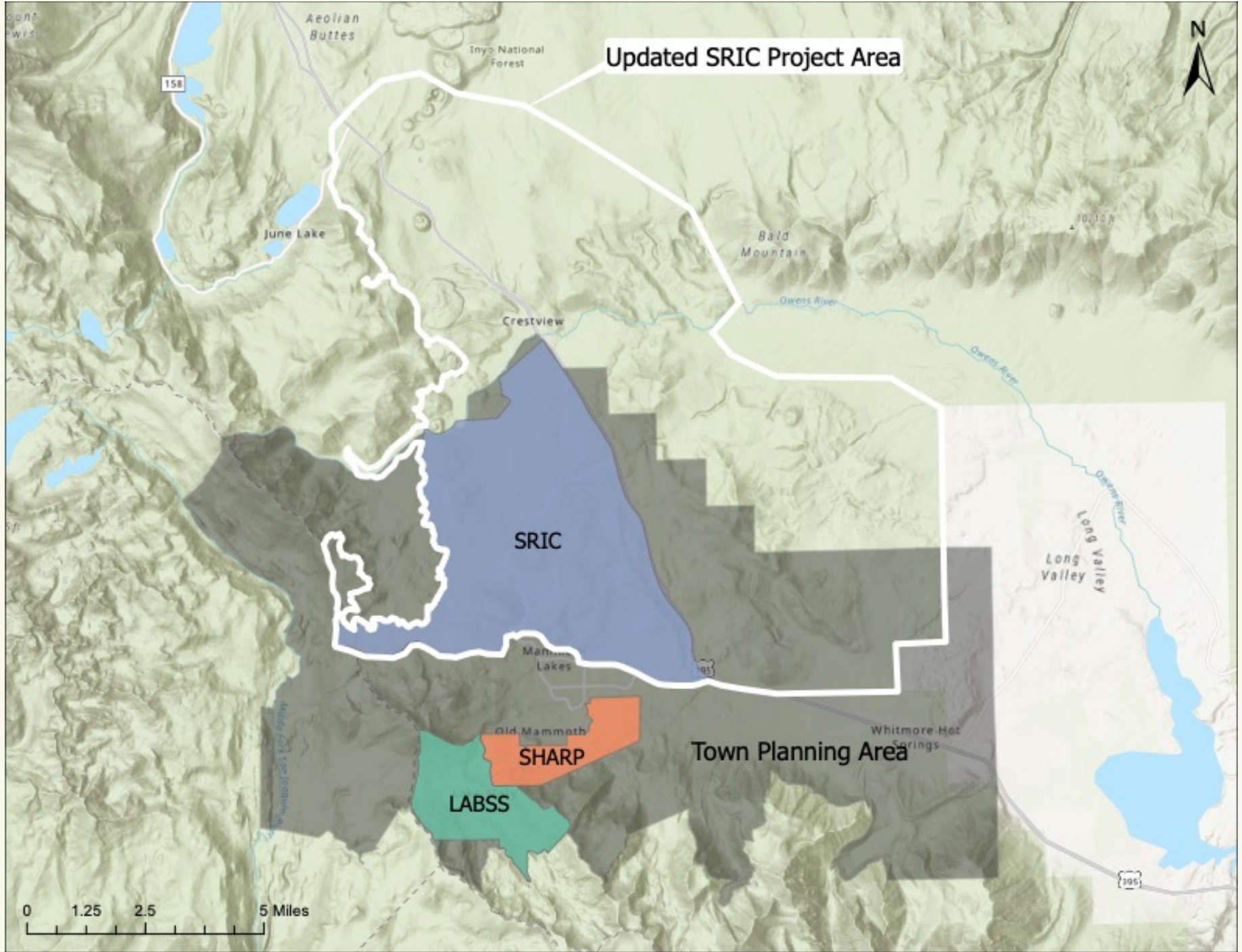
SHARP

LABSS

Owens River
Headwaters
Wilderness

Ansel Adams
Wilderness

John Muir
Wilderness



Updated SRIC Project Area

SRIC

SHARP

LABSS

Town Planning Area

0 1.25 2.5 5 Miles



~Public Outreach~



~Public Outreach~



- Mammoth Trails Community Meeting 06/17/21
- Mammoth Trails Community Meeting 03/25/21
- Mammoth Trails Community Meeting 01/21/21
- Mammoth Trails Committee 10/15/20
- Mammoth Trails Committee 08/13/20
- Mammoth Trails Committee 06/11/20
- Mammoth Trails Committee 02/13/20
- TOML Council 02/05/20



~Public Outreach~

**74 Individual Email Invitations Sent for
One-on-One Meetings**



~Public Outreach~

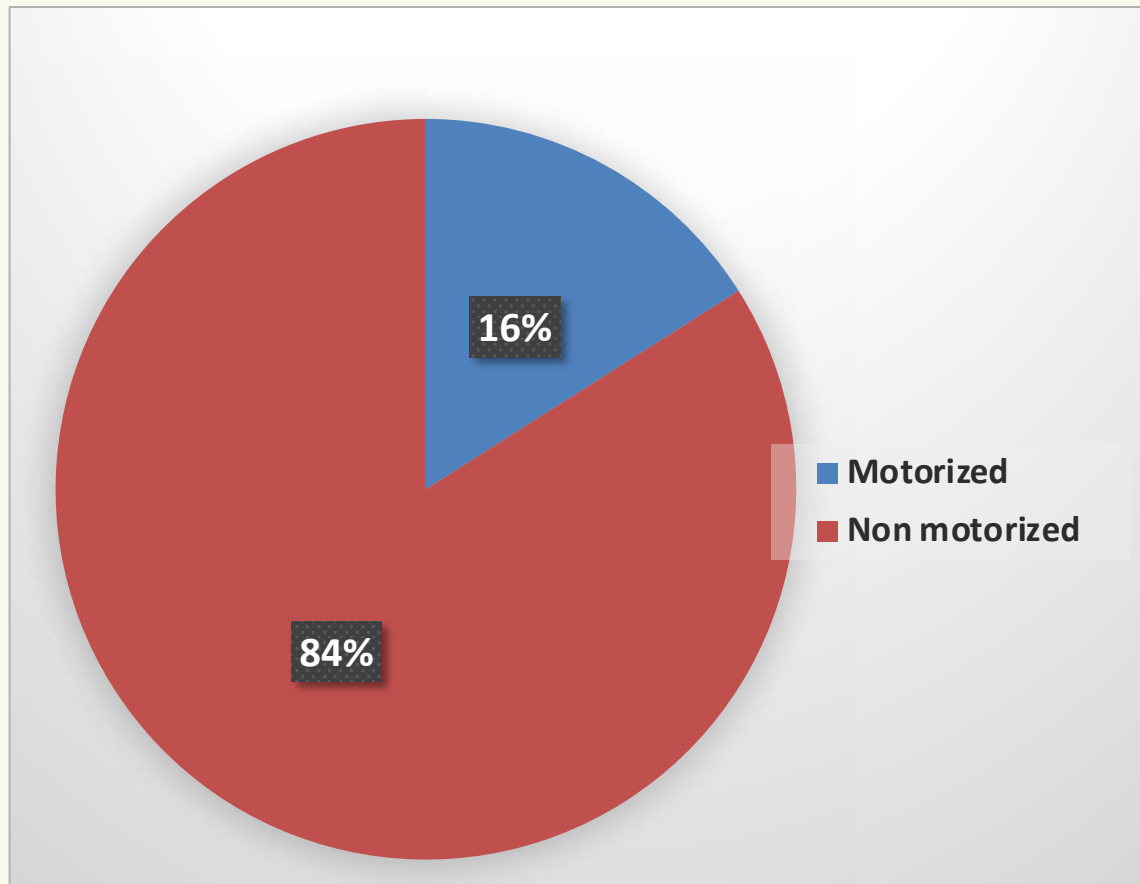
Shady Rest Inyo Craters (SRIC) Public Survey Results

243 participants covering over **10 CA
counties**

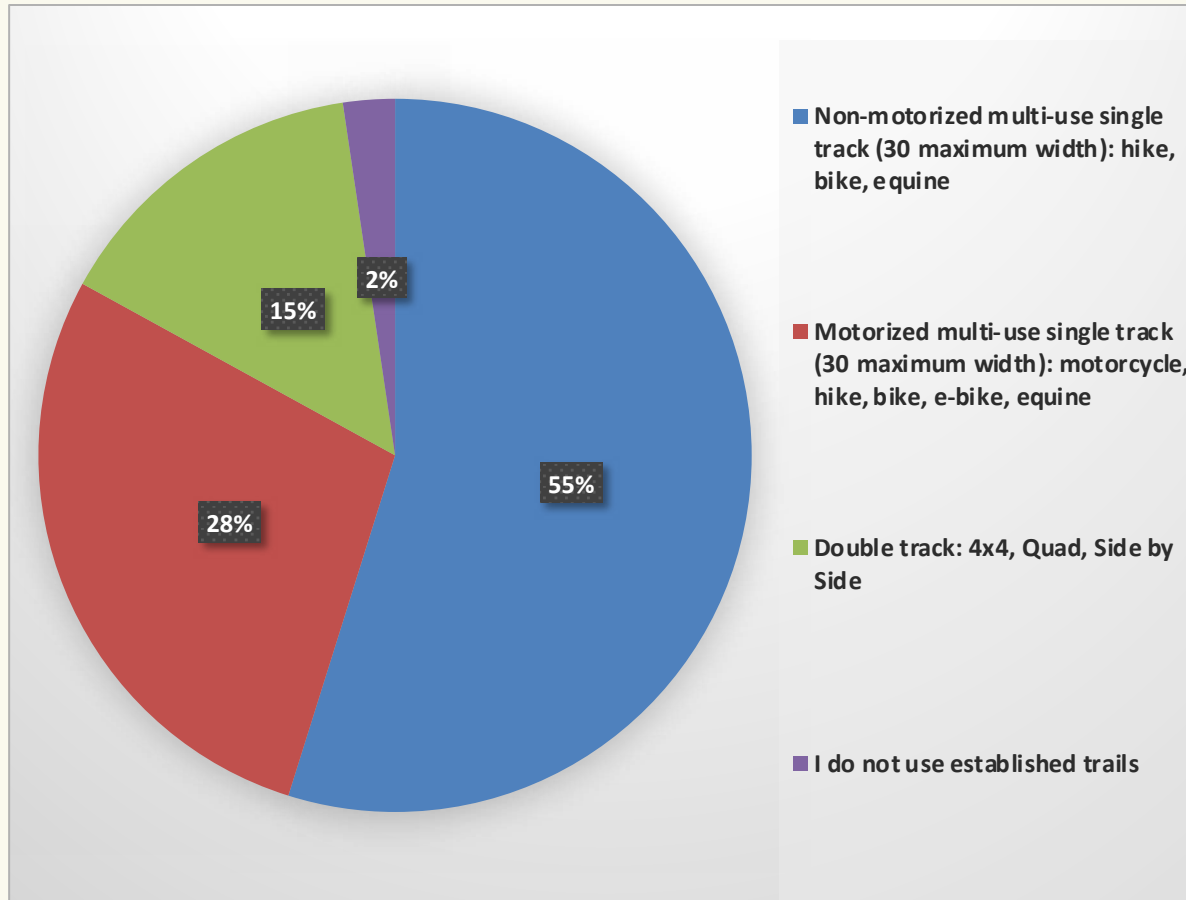
March 5 – June 30th, 2021

Shady Rest Inyo Craters Area - Public Recreation Trends

Survey Participants: Motorized vs. Nonmotorized Users

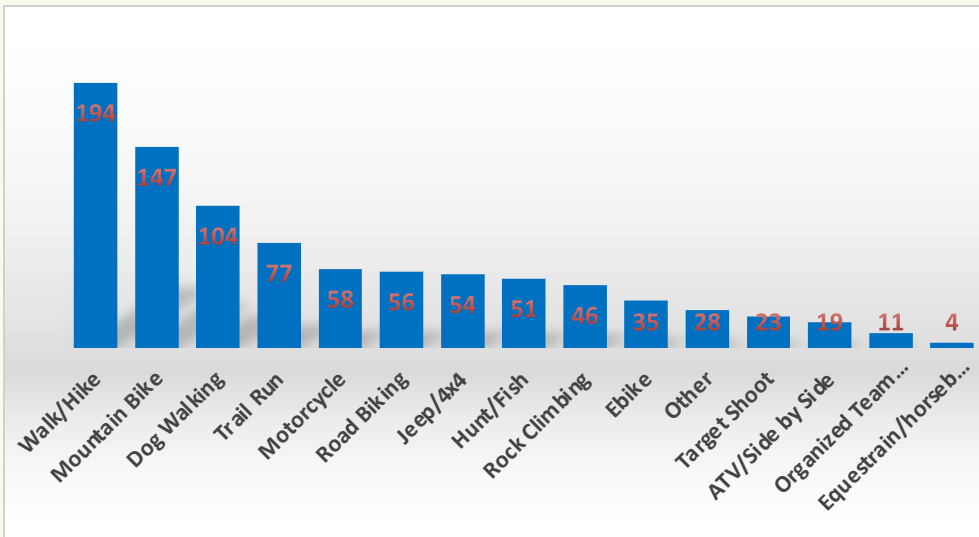


Participant Preferred Trail Types for Study Area

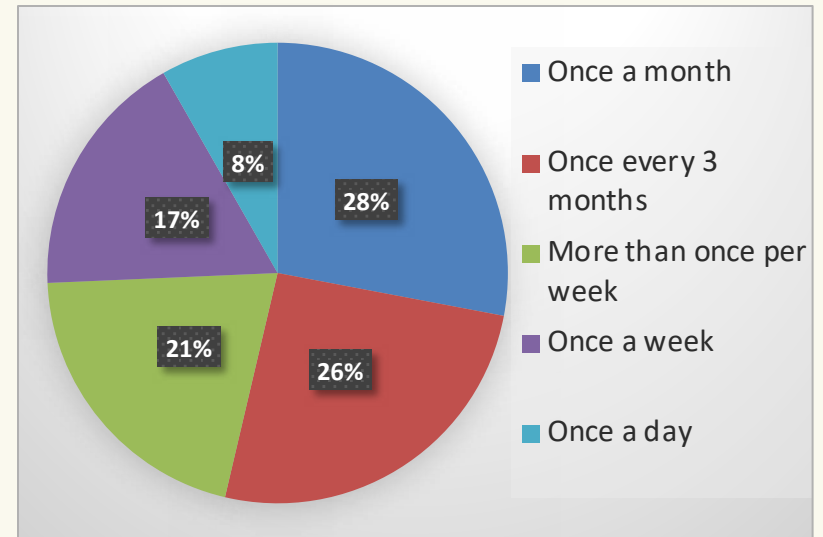


Survey Results: Recreational Activities and Use

- The most popular recreational activities in the study area include walking, hiking and mountain biking.



- 74% of participants recreate regularly in the SRIC area (more than once a month).

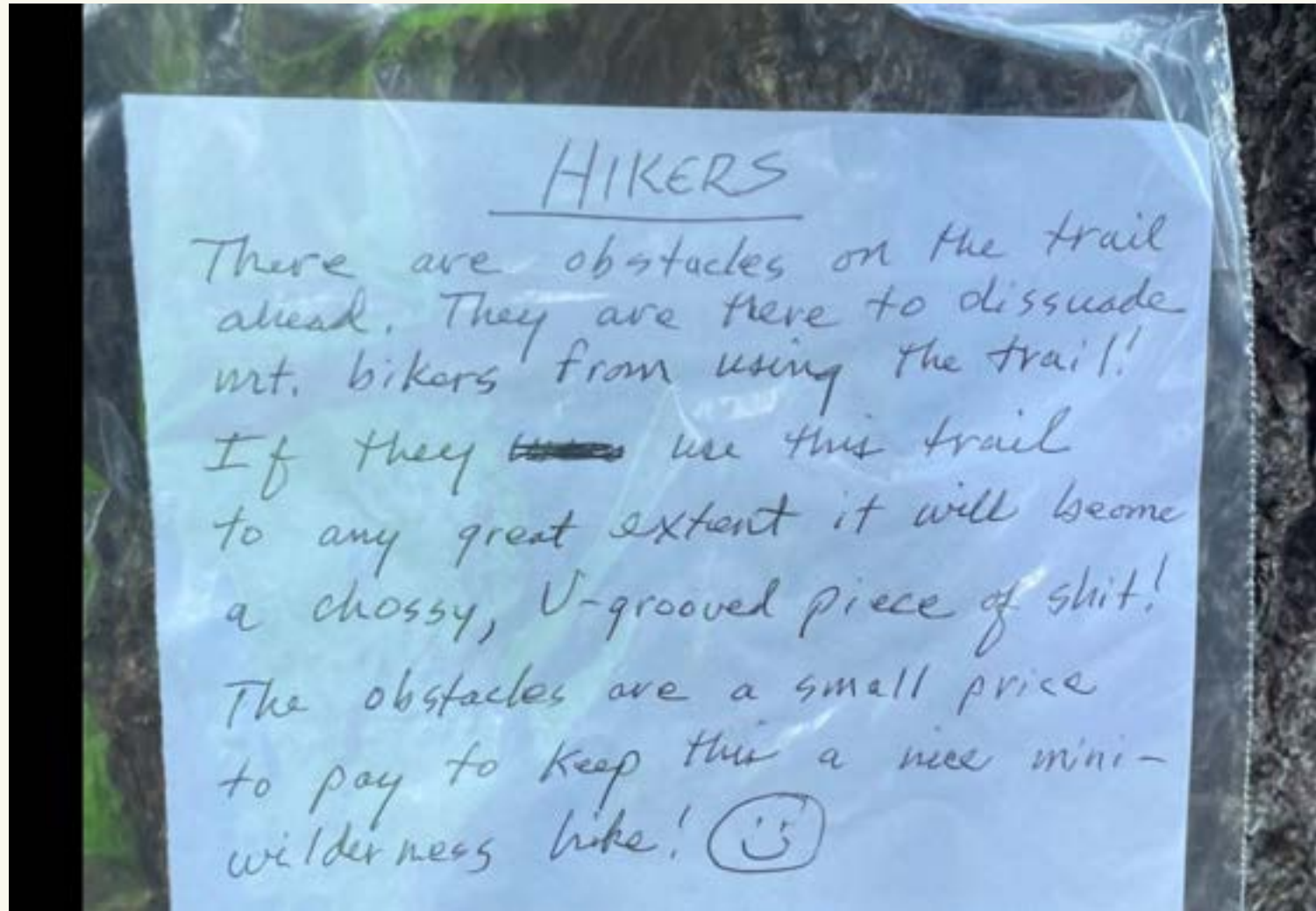


Top 5 Public Perceived Recreation Limitations Affecting the Study Area:

- 1) Conflicts between people using the same trails, areas, etc.
- 2) Areas are too crowded
- 3) Recreation areas damaged or overused
- 4) Parking and staging
- 5) Access to project area

Other: Not enough single track, noise, safety concerns, excessive dispersed camping, too many mixed recreation user types on trails, dog waste, trash, maintenance, signage, etc.

Top 5 Public Perceived Recreation Limitations Affecting the Study Area:



Conclusions

- 83% of survey participants desire recreational trails that connect communities adjacent to the project area.
- 72% of survey participants desire more recreational trails in SRIC area (“More single-track trails”)
 - Separate moto from nonmotorized use
 - Less multi-use more activity specific trail designation for both winter and summer activities
- 38% reported they would use a designated OHV open riding area within the project area
- 45% reported they would volunteer to help plan, build and maintain trails in the project area

Conclusions/Themes

- “More parking and staging areas”
- “Restrooms”
- “Trash, recycling, pet waste stations”
- “Year round access”
- “More dog friendly/specific trails and designated off leash area”
- “More Signage”
- “Organized routes (activity and season specific)”
- “Regular maintenance”



~Public Outreach~

Only 5 Letters of Support Received So Far!

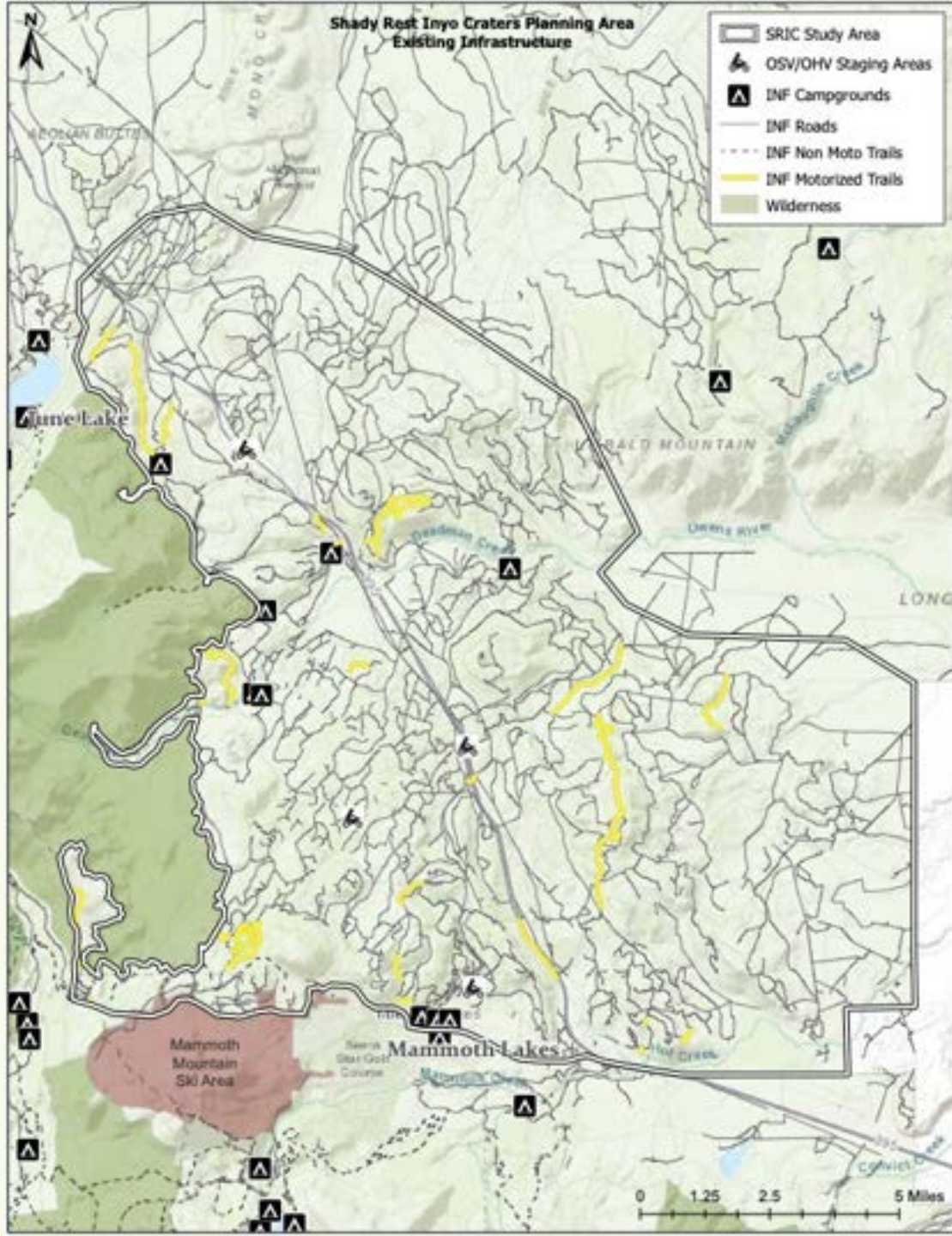


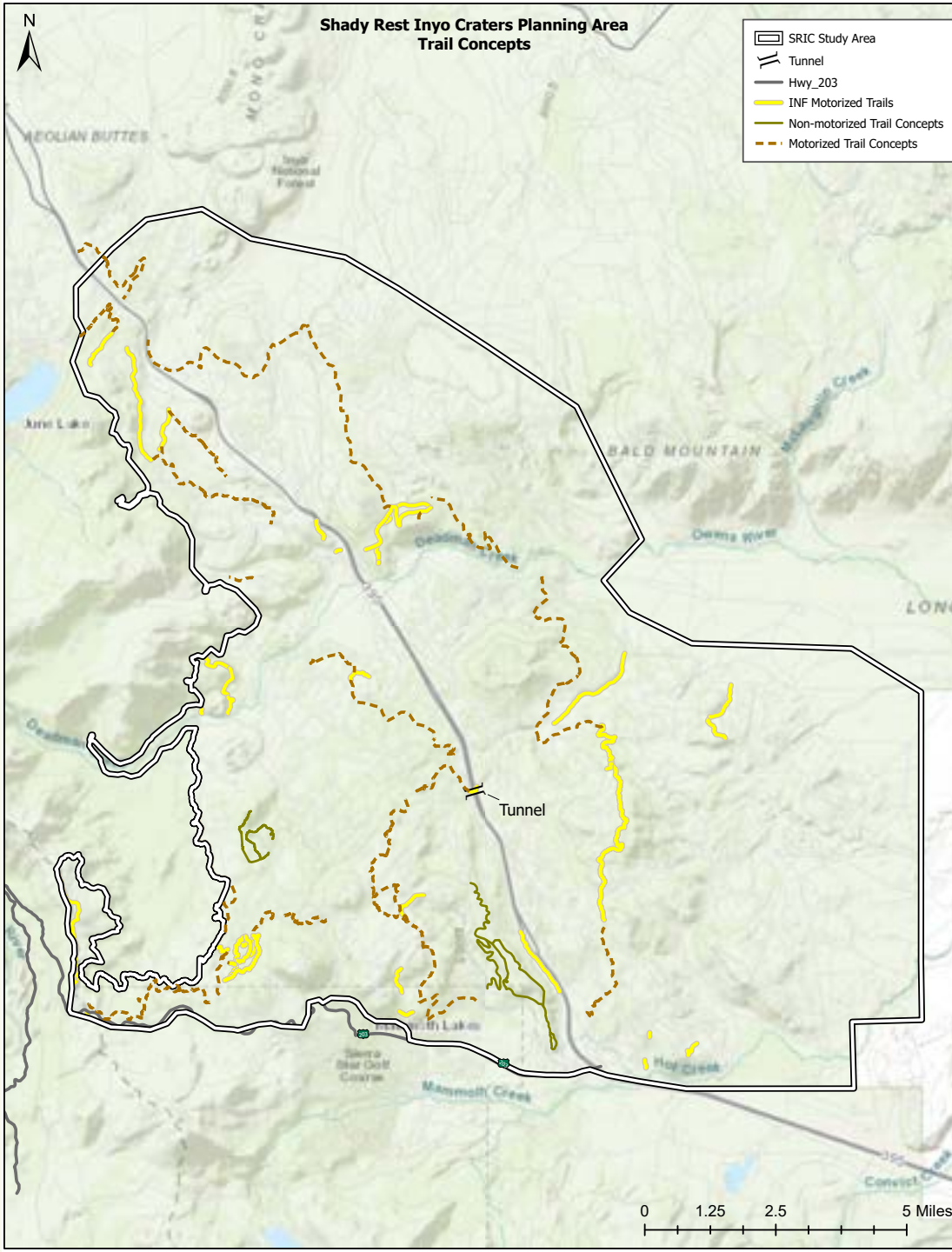
~Concept Development~

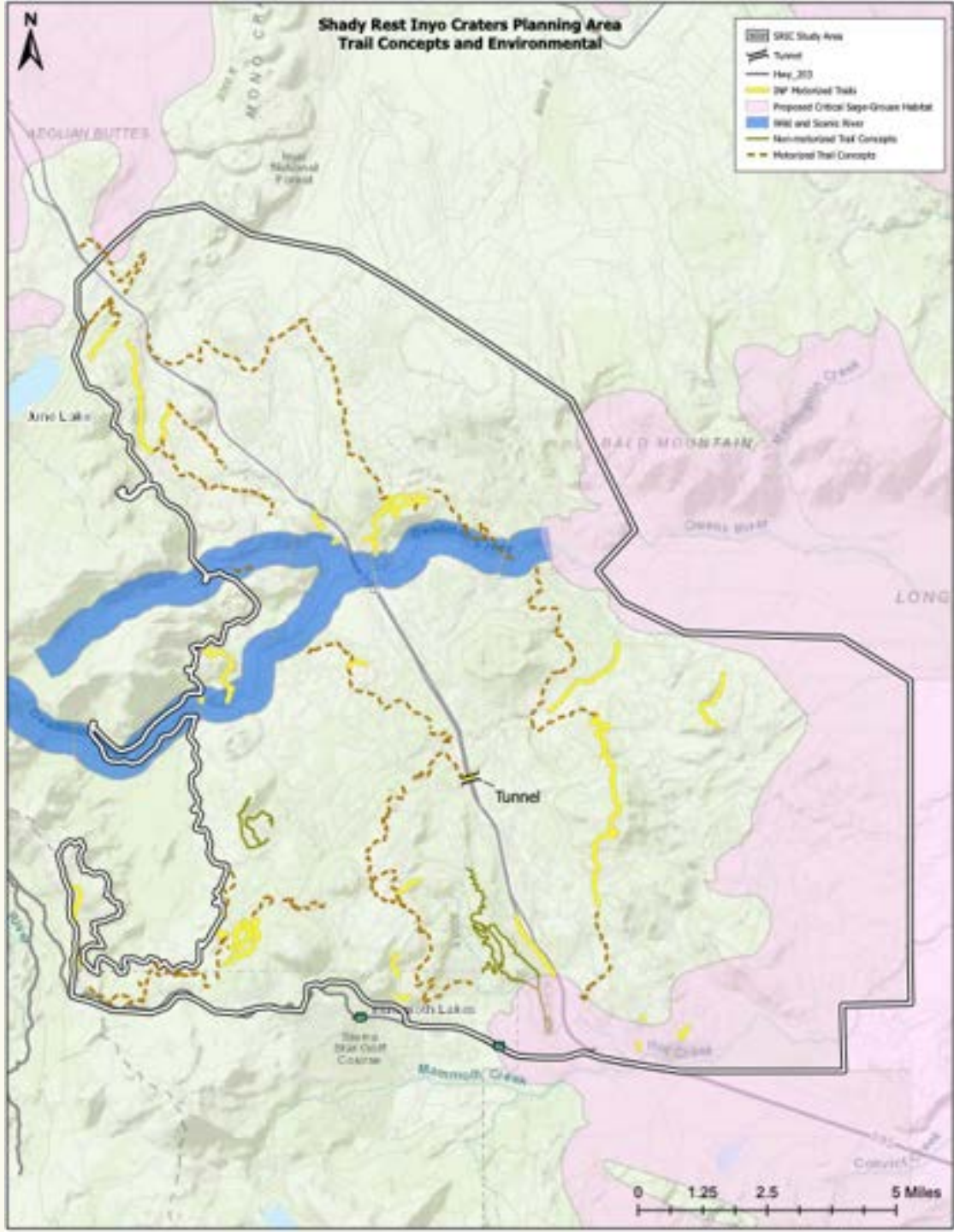
- **Motorized Multi Use Trail Connection from Mammoth to June on the East Side of Highway 395**
- **Motorized Multi Use Trail Connection from Mammoth to June on the West Side of Highway 395**
- **Motorized Multi Use Trail Connection from Shady Rest to Minaret Vista**
- **Identified Non-Motorized Multi-Use Trail Development Areas**
- **Staging Areas – Shady Rest, June Lake Junction, Inyo Craters**











~Planning Considerations~



Connectivity – Inventory – System Function



~Planning Considerations~



Signage and Wayfinding – Staging Areas – Inclusion



~Planning Considerations~



Education – Stewardship – Jobs/Training – Enforcement



~Planning Considerations~



**Maintenance Program – Sensitive Resource Avoidance –
Forest Restoration – Managed vs. Unmanaged
Recreation**



~MLTS 2021/2022 Timeline~

November 2021

- Share 2021 season of work
- Preparation of proposed action for recommendations for maintenance, staging areas, route identification, new trail connections, stewardship, and on-going partnerships

April 2022

- Mammoth Trails meeting to share final concepts
- Corridor design finalization

September 2022

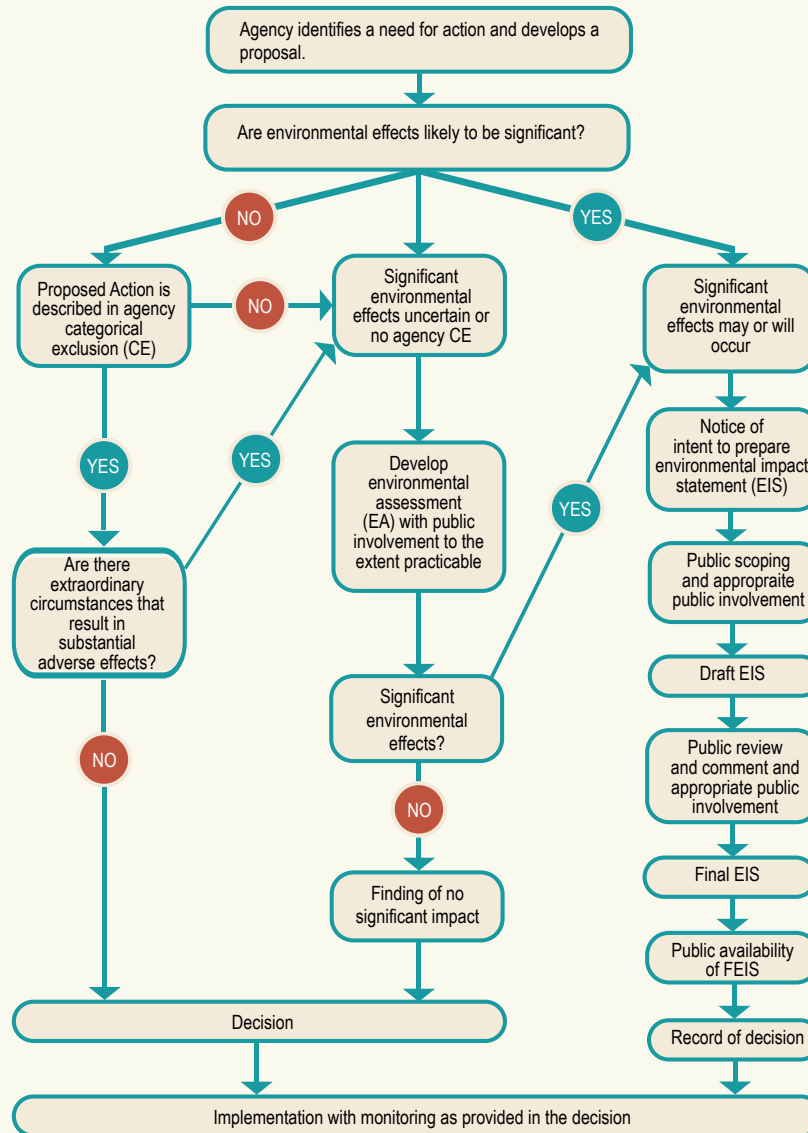
- Publish and Deliver Planning Document and Proposed Action



~Concept Planning Steps~

- Step 1:** Collect data from NF (System Trails, etc.) and other layers (parcel data, etc.) from Counties
- Step 2:** Analyze regional survey data and hands on mapping outreach results
- Step 3:** Generate clean geodatabase for trail concept planning
- Step 4:** Present data to Partners, Mammoth Trails Committee, Trail Users and Public, etc. with recommendations for Trail Facility Concepts, Programming, and Sustainability
- Step 5:** Synthesis of public feedback, staff field data collection
- Step 6:** Present concept to land manager “specialists” for scoping and initial route approval
- Step 7:** Ground proofing and GIS mapping route corridor (100’ wide corridor for environmental analysis). USFS Specialists analyze proposal and provide feedback to Line Officer
- Step 8:** Revisit and share findings (changes/challenges) with planning team and land manager
- Step 9:** Generate Trail Feasibility Study based on planning team and land manager input
- Step 10:** Land manager, County and Town approval of Feasibility Study
- Step 11:** Shady Rest Inyo Craters Trails Plan Publication
- Step 12:** Land manager, County and Town approval and adoption/acceptance of Trails Plan

The NEPA Process



**Significant new circumstances or information relevant to environmental concerns or substantial changes in the proposed action that are relevant to environmental concerns may necessitate preparation of a supplemental EIS following either the draft or final EIS or the Record of Decision (CEQ NEPA Regulations, 40 C.F.R. § 1502.9(c)).*

~Thank You for Your Support~

The more support we can show the bigger the impact we will have on the outcome. Our goal is to create a united voice to speak for our communities and trail users.

mammothlakesrecreation.org/sric



~Thank You for Your Support~

